

Anti-EDG6 Antibody
Rabbit polyclonal antibody to EDG6
Catalog # AP59750**Specification**

Anti-EDG6 Antibody - Product Information

Application	WB
Primary Accession	O95977
Reactivity	Human, Mouse
Host	Rabbit
Clonality	Polyclonal
Calculated MW	41623

Anti-EDG6 Antibody - Additional Information**Gene ID** 8698**Other Names**

EDG6; Sphingosine 1-phosphate receptor 4; S1P receptor 4; S1P4; Endothelial differentiation G-protein coupled receptor 6; Sphingosine 1-phosphate receptor Edg-6; S1P receptor Edg-6

Target/Specificity

KLH-conjugated synthetic peptide encompassing a sequence within the C-term region of human EDG6. The exact sequence is proprietary.

Dilution

WB~~WB (1/500 - 1/1000)

Format

Liquid in 0.42% Potassium phosphate, 0.87% Sodium chloride, pH 7.3, 30% glycerol, and 0.09% (W/V) sodium azide.

Storage

Store at -20 °C. Stable for 12 months from date of receipt

Anti-EDG6 Antibody - Protein Information**Name** S1PR4**Synonyms** EDG6**Function**

G protein-coupled receptor highly expressed in immune cells, where it regulates immune response and cytokine production. Functions as a receptor for the lysosphingolipid sphingosine-1-phosphate (S1P). Upon S1P binding, promotes regulatory T-cell differentiation and enhances fatty acid oxidation, through activation of the NRF2/PPARA signaling pathway (By similarity). Modulates also M1 macrophage activation through interaction with FPR2 and the JNK signaling, contributing to the inflammatory response (By similarity). In addition, facilitates early neutrophil mobilization and

vascular activation during inflammation, promoting lymphocyte recruitment to draining lymph nodes and supporting the development of germinal centers for an effective adaptive immune response (By similarity).

Cellular Location

Cell membrane; Multi-pass membrane protein.

Tissue Location

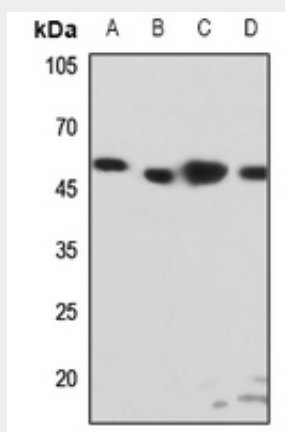
Specifically expressed in fetal and adult lymphoid and hematopoietic tissue as well as in lung. Considerable level of expression in adult and fetal spleen as well as adult peripheral leukocytes and lung. Lower expression in adult thymus, lymph node, bone marrow, and appendix as well as in fetal liver, thymus, and lung

Anti-EDG6 Antibody - Protocols

Provided below are standard protocols that you may find useful for product applications.

- [Western Blot](#)
- [Blocking Peptides](#)
- [Dot Blot](#)
- [Immunohistochemistry](#)
- [Immunofluorescence](#)
- [Immunoprecipitation](#)
- [Flow Cytometry](#)
- [Cell Culture](#)

Anti-EDG6 Antibody - Images



Western blot analysis of EDG6 expression in HEK293T (A), Hela (B), HepG2 (C), mouse spleen (D) whole cell lysates.

Anti-EDG6 Antibody - Background

KLH-conjugated synthetic peptide encompassing a sequence within the C-term region of human EDG6. The exact sequence is proprietary.